

COMMODITIES

- Sells refined products inventory resulting from fractionation, blending activities and positions from operational gains
- Participates in spot and forward wholesale markets



KEY CONTACTS

Jeff Selvidge
 Senior Vice President
 Commercial, Refined Products
 918.574.7403

MARINE & SOUTHEAST TERMINALS

Craig Yocham
 Director
 Commercial – Marine &
 Southeast Terminals
 918.574.7321

Tony Bogle
 Manager
 Commercial – Southeast
 & Northeast
 918.574.7382

Kyle Krshka
 Manager
 Commercial – Pasadena &
 Gas Liquids Development
 918.574.7560

Don Pheonix
 Manager
 Traffic & Inventory –
 Galena Park
 713.330.2725

Jared Wehde
 Manager
 Commercial – Galena Park &
 Marrero Terminals
 918.574.7713

Mike Hutton
 Supervisor
 Commercial – Southeast Logistics
 918.574.7428

Adonis Brewer
 Project Manager
 Commercial – Southeast
 & Northeast
 918.574.7196

Chad Compton
 Project Manager
 Commercial – Galena Park
 & Marrero Terminals
 918.574.7258

Fawn McWilliams
 Project Manager
 Commercial – Southeast
 918.574.7638

Wes Pullin
 Project Manager
 Commercial – Pasadena
 918.574.7973

COMMODITIES

Mark Lassman
 Director
 Gas Liquids Supply & Logistics
 918.574.7977

Andy Slawson
 Manager
 Gas Liquids Supply & Logistics
 918.574.7960

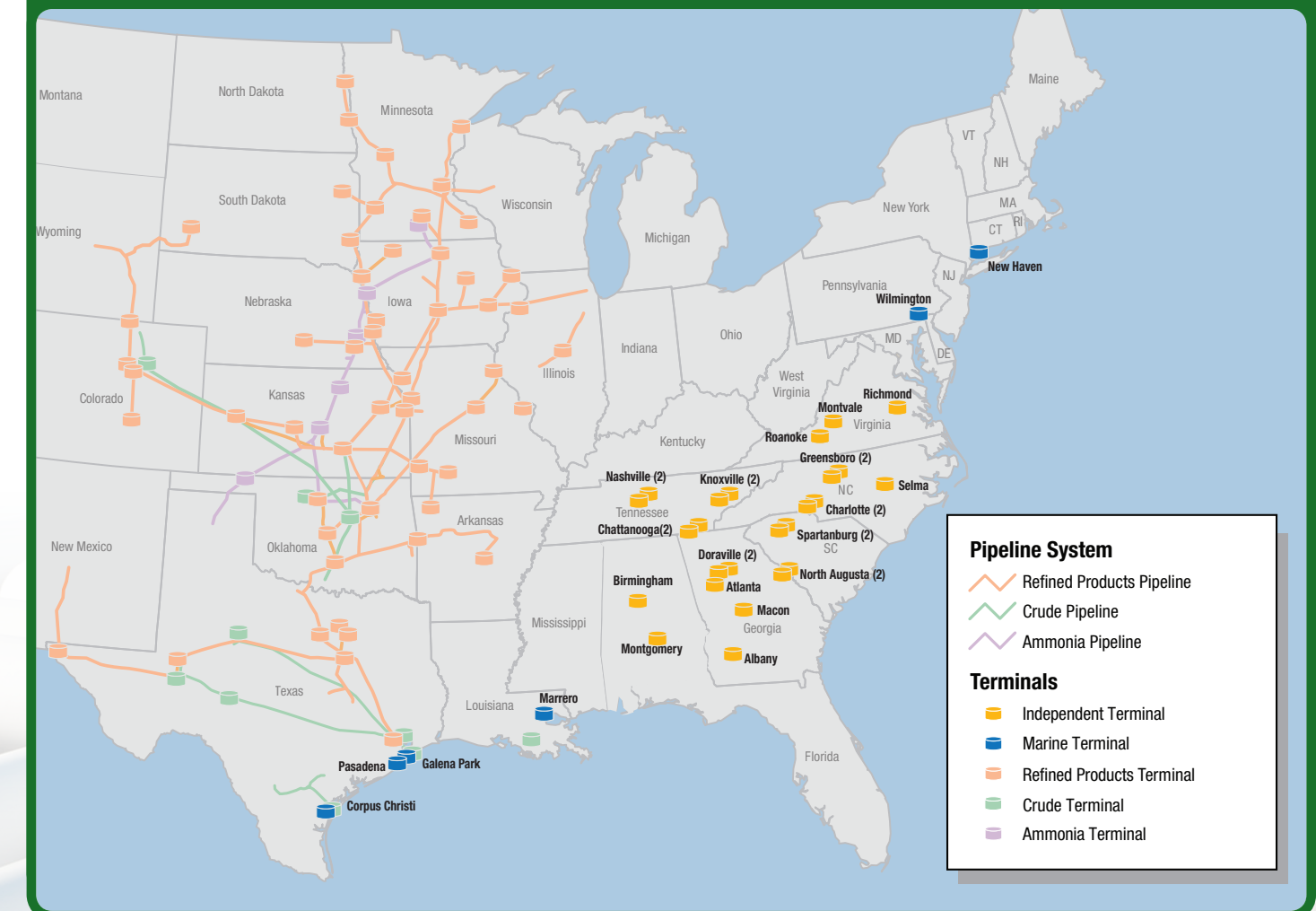
Shannon Kanneman
 Manager
 Commercial, Commodities
 918.574.7748

OVERVIEW

Magellan Midstream Partners L.P. is a publicly traded partnership formed to own, operate and acquire a diversified portfolio of energy assets. We are a key component of our nation's energy infrastructure and provide essential transportation, distribution and storage services for our nation. Magellan can tap into nearly 50 percent of the nation's refining capacity and store more than 100 million barrels of petroleum products, such as gasoline, diesel fuel and crude oil. We currently own the longest refined petroleum products pipeline system in the country. Our assets include over 80 petroleum products terminals, 9,700 miles of refined products pipelines, 2,200 miles of crude oil pipelines, and an 1,100 mile ammonia pipeline system.

Magellan continues to seek out potential organic growth opportunities in all areas of our business. These include incremental storage, new pipeline connections, expansion of our existing facilities and further advancement of our marine infrastructure capabilities in the Gulf Coast region. Magellan's team will ensure we not only meet your day to day throughput and storage needs, but that we also continue to grow and expand with you so that Magellan remains your preferred service provider.

ASSET MAP



GALENA PARK TERMINAL

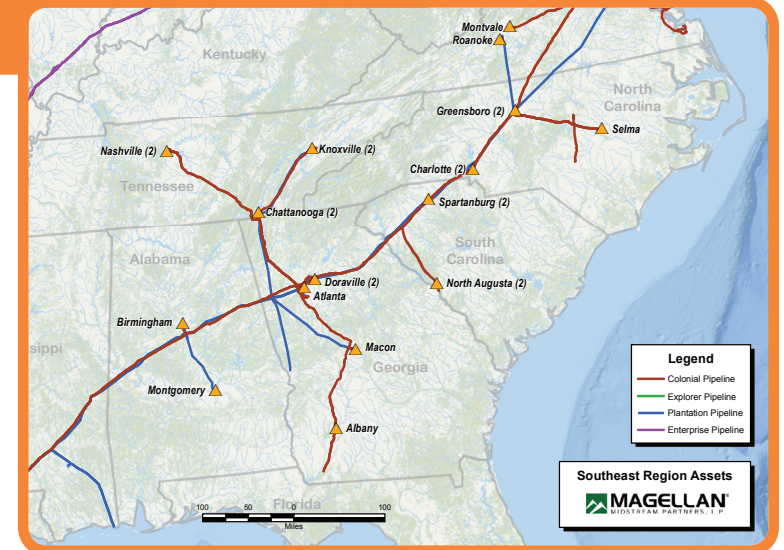
- Located in Galena Park, TX, on the Houston Ship Channel
- Storage Capacity: 14.5 million barrels
- Products: Gasolines, Diesel Fuels, Fuel Oils, Jet Fuel, Kerosenes, Condensate/Naphtha, Blendstocks, Crude Oil, and Residual Fuel Oils
- Butane blending by truck or pipeline and Natural Gasoline blending by pipeline
- Access: 2 Ship Docks, 2 Barge Docks, 2 Railcar Racks, 1 Truck Rack
 - Manifest rail loading and offloading services available
 - Magellan is currently evaluating adding unit train capabilities
- Direct connections to multiple refinery origins along the Houston Ship Channel, Texas City and Pt. Arthur
- Supply access to the MPL South system as well as Colonial and Explorer Pipelines from virtually any Gulf Coast Refinery



Magellan's new 3rd ship dock is expected to be fully operational 4Q 2018.

SOUTHEAST TERMINALS

- Comprised of 25 terminals that supply 15 markets in the Southeast Region
- Storage Capacity: 6 million barrels
- Magellan has 9 markets that are comprised of 2 terminals
 - Dual connectivity to Colonial and Plantation Pipelines in 8 markets
- Expansion projects currently underway in the Nashville
- Evaluating expansion opportunities throughout the Southeast, including Macon, Selma, Atlanta and North Augusta

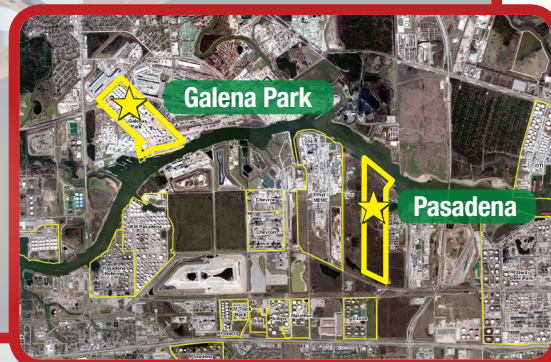


MARRERO TERMINAL

- Located in Marrero, LA, on the Mississippi River
- Storage Capacity: 3.1 million barrels
- Products: Residual Fuel Oils (#6, Pye Pitch, Slurry), Cutterstocks
- Access: 1 Ship Dock, 2 Barge Docks, 1 Manifest Rail Spur, 2 Spot Truck Rack

PASADENA TERMINAL (MVP TERMINALLING, LLC)

- Located 2.5 miles east of MMP's Galena Park terminal on the Houston Ship Channel
- **Planned Assets:**
 - Storage Capacity: 10 million barrels
 - Products: Refined Products and Blendstocks
 - Ethanol (pipeline/truck), Butane (pipeline/truck), and Biodiesel blending capabilities
 - Access: 4 Ship Docks, 1 Double Tow Barge Dock, Truck Rack
- **Potential Pipeline Connectivity:**
 - All refinery origins along the Houston Ship Channel and Texas City
 - Gulf Coast area pipelines and MPL South system
- Expected date of operation is 1Q 2019 for initial phase



NORTHEAST TERMINALS

NEW HAVEN TERMINAL

- Located in New Haven, CT, on the Long Island Sound near the New York Harbor
- Storage Capacity: 4 million barrels
- Products: RFG, Premium RFG, Ethanol, ULSD, Kerosene, Heating Oil, Biodiesel, Asphalt
- Access: 2 Ship Docks, 3 Barge Docks, 4 Truck Racks (9 Spot, 7 Spot, 6 Spot, 2 Spot Asphalt)
- Connectivity: Gulf Oil, Gateway, New Haven Terminal, Buckeye Origin
- Largest truck loading capacity in the New Haven market

WILMINGTON TERMINAL

- Located in Wilmington, DE, on the Delaware River
- Storage Capacity: 2.8 million barrels
- Products: RFG, Premium RFG, CBOB, Ethanol, ULSD, Crude Oil, Residual Fuel Oils
- Access: 1 Ship Dock, 1 Barge Dock, 8 Spot Truck Rack
- Pipeline connection to Delaware City refinery

