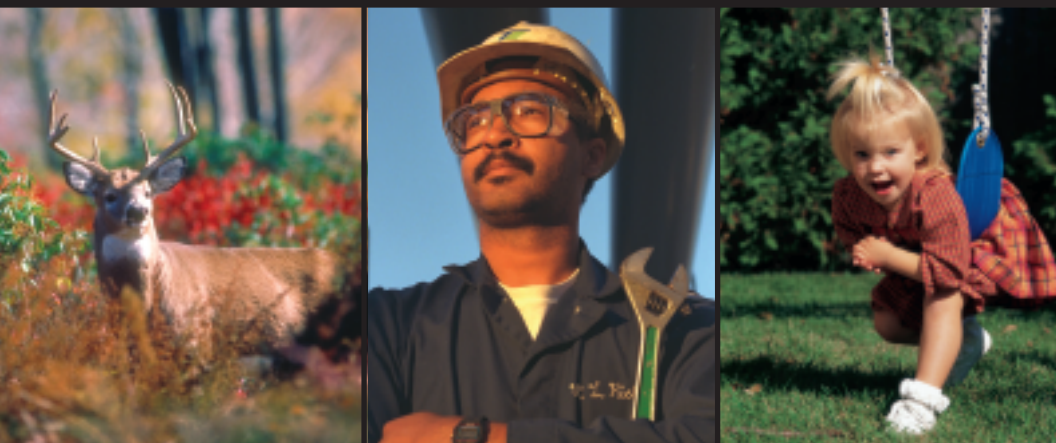


THANK YOU *from all of us*

for using the One-Call system.



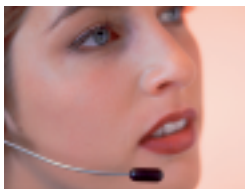
FREE to you!

PRICELESS to everyone!

Benefits of using One-Call:

- Public safety
- Clean environment
- Uninterrupted utilities

*Let's keep our
communities safe
and clean*



Critical Steps for a Successful Excavation

Step

1

Call Before You Dig

National One-Call Referral Number
(888)258-0808

Step

2

Dig with Care

For excavation around underground facilities, Magellan Midstream Partners endorses and recommends the “Excavation Best Practices” outlined by the Common Ground Alliance. To learn more, go to www.commongroundalliance.com on the Web.

Pipeline Representative On-Site

When planning to dig near one of Magellan’s pipelines, we require that one of our representatives be on-site during excavation, construction activities or back filling around Magellan’s assets. Please call the Magellan representative listed on the attached business card (opposite side) and we’ll be at your job site, doing our part to ensure a safe project.

Emergency Contact: (800)720-2417

Please call us night or day, weekends and holidays included to report an emergency involving Magellan’s pipelines.

Reporting an Incident

Please report all incidents involving Magellan’s assets to the Magellan representative listed on the attached business card (opposite side) or call even if the damage seems minor. Minor scrapes, dents, scratches or creases to a pipe or coating can cause corrosion. Pipeline corrosion could result in a future product leak or serious accident. **DON’T COVER UP A POTENTIAL PROBLEM!**

THANK YOU

*for helping to keep
our communities
safe and clean*



(800)720-2417
www.magellanlp.com



Dig|Safely.